

NO.	ALLEN COUNTY	FG-FTA	FT-PTA	REB	P	TP	A
12	JENNIFER OLSON	3-4	0-0	2	2	6	8
35	JENNIFER CONZON	2-3	0-0	3	0	4	1
42	DEBRA SMITH	2-7	0-0	5	0	4	1
44	ANGEL RIPPY	1-5	2-2	3	3	6	0
20	RENEE GARDNER	2-6	2-3	3	0	6	0
32	VERA HALL	0-1	0-0	1	3	0	0
22	TAMMY LYLES	0-0	0-0	1	0	0	0
	TEAM	1-1	-			2	
TOTALS		11-26	4-5	18	8	28	6

PERCENTS 42.3% 80.0% 3 TEAM REBOUNDS (NOT IN TOTALS)

NO.	PARIS	FG-FTA	FT-PTA	REB	P	TP	A
44	BETH WENZEL	2-8	0-0	6	2	4	0
22	KELLY GALLAGHER	0-3	2-2	2	0	2	0
11	REGINA WOODFORD	1-4	4-4	4	1	6	1
20	JENNIFER REYNOLDS	0-3	0-1	2	1	0	0
44	CATY STILES	2-7	0-0	1	0	4	0
32	TAMMY CRAMER	0-0	0-0	0	0	0	0
15	MARY ZEMER	0-2	1-2	2	0	1	0
TOTALS		5-27	7-9	17	4	17	1

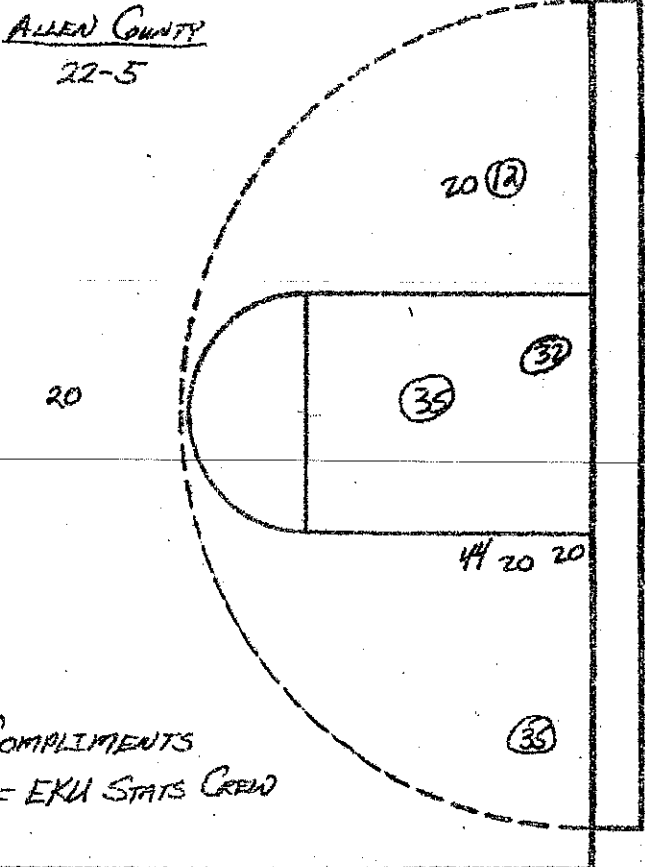
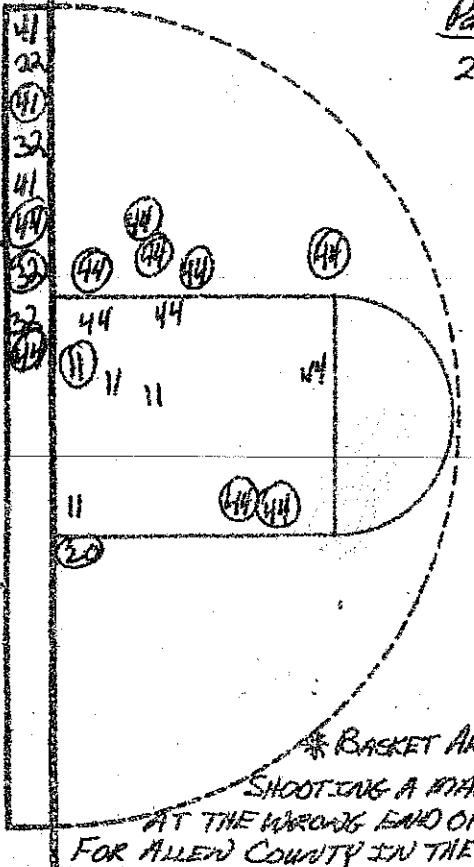
PERCENTS 18.5% 77.8% 2 TEAM REBOUNDS (NOT IN TOTALS)

QUARTER'S SCORES ALLEN COUNTY 10-17-20

PARIS 2-11-17

turnovers

20:12
11:42
44:22
44:20
41:12
32:20
22:44
20:44
41:20
15:12
13:14
12:12
12
16
15
16
17
18



NO.	<u>PARIS</u>	FG-FGA	FT-FTA	REB	P	TP	A
44	BETH WILKINSON	11-20	0-0	11	3	22	0
22	KELLY GALLOWAY	0-4	2-3	2	1	2	1
11	REGINA WOODFORD	2-8	4-4	4	4	8	1
20	JENNY REONLINE	1-4	0-1	3	5	2	0
41	CATHY STEELS	3-10	5-8	4	2	11	4
32	TAMMY CRUMBIE	1-3	4-6	2	0	6	1
15	MARY ZWISGA	0-2	1-2	2	0	1	1
	-	-	-				
	-	-	-				
	-	-	-				
	-	-	-				
	-	-	-				
	-	-	-				
	-	-	-				
	-	-	-				
	-	-	-				
	-	-	-				
	-	-	-				
TOTALS		18-51	16-24	33	15	52	8
PERCENTS		35.3%	66.7%	3	TEAM REBOUNDS (NOT IN TOTAL)		

NO.	<u>ALLEN COUNTY</u>	FG-FGA	FT-FTA	REB	P	TP	A
12	JOHANNA OLIPHANT	4-5	6-7	2	2	14	6
35	JENNY CUMMINGS	4-5	4-6	6	2	12	2
42	DONNA SMITH	2-7	0-0	7	2	4	1
44	ANGEL RIPPY	2-6	2-2	5	5	6	0
20	PRYNTHIA CLEMENTS	2-10	5-9	5	2	9	1
32	VERA HALL	1-2	0-0	1	4	2	0
22	TAMMY LYLES	0-0	0-0	1	2	0	0
	* TEARD BASKET	-	-			2	
	-	-	-				
	-	-	-				
	-	-	-				
	-	-	-				
	-	-	-				
	-	-	-				
	-	-	-				
	-	-	-				
	-	-	-				
TOTALS		15-35	17-24	29	19	49	10
PERCENTS		42.9%	70.8%	3	TEAM REBOUNDS (NOT IN TOTAL)		

QUARTERS PARIS
SCORE BY QUARTERS: 8-11-11-13-5=52

ALLEN COUNTY
15-13-11-8-2=49

OFFICIALS: ORRRELL BOGAR-HEADY, PAYLORS EVERLY-CENTRAL CITY

ATTENDANCE Est. 4400 5th SESSION